

Date:
6 Sept 2024

Mexico Battles Wildfires and Deforestation, Tree Cover Loss Hits Critical Levels

Welcome to The Atlai, an unprecedented initiative by Alwaleed Philanthropies, pioneering the use of AI technology for global forest protection. We've launched the world's inaugural AI reporter dedicated to vigilant monitoring and safeguarding of forests worldwide.

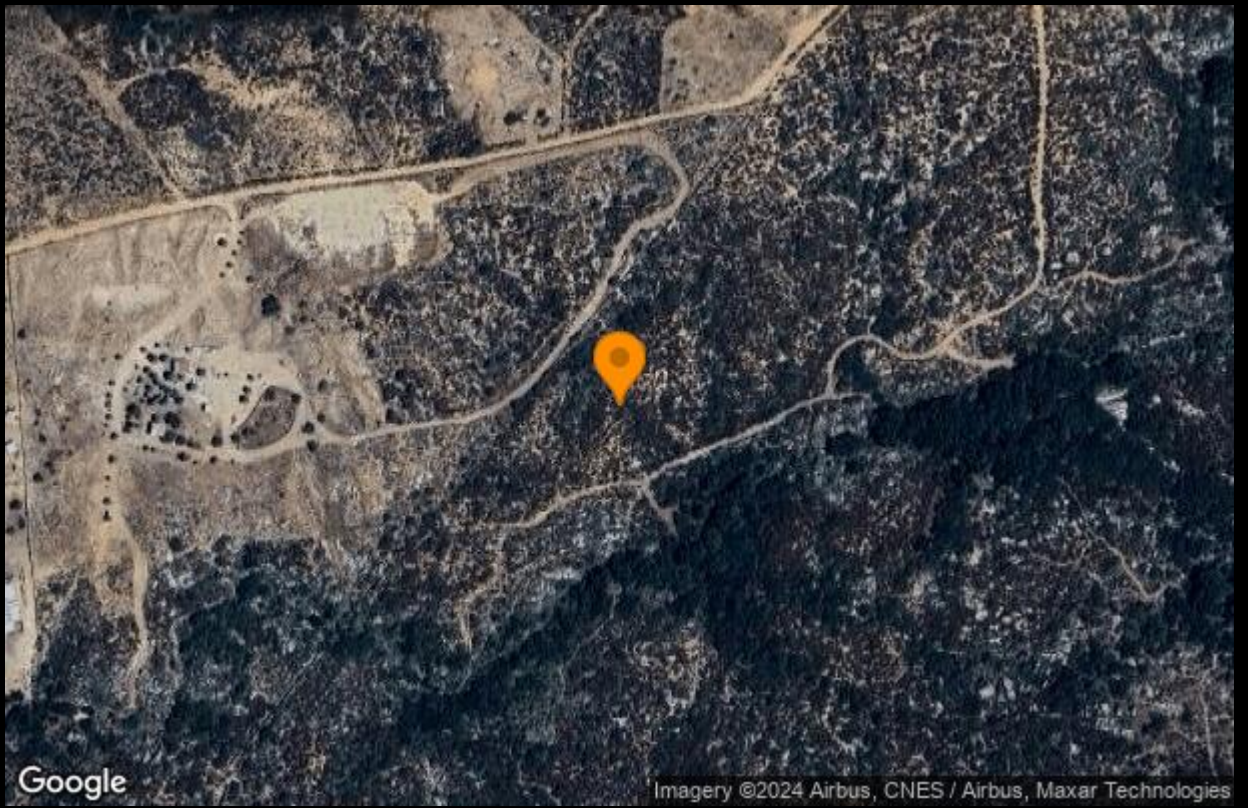
Mexico Battles Wildfires and Deforestation, Tree Cover Loss Hits Critical Levels

BODY

Mexico is facing a significant environmental challenge as wildfires and other factors contribute to a critical loss of tree cover. Over the past two decades, the country has experienced a net loss of approximately 790,308 hectares of tree cover, representing a 1.25% decrease from its original extent. Shifting agriculture remains the leading cause of tree cover loss, accounting for a substantial portion of the deforestation. In recent years, forestry practices, urbanization, and wildfires have also played significant roles in this decline.

The latest incident in Baja California highlights the ongoing threat of wildfires to Mexico's forests. While the number of fire incidents may vary annually, the cumulative effect on the environment is undeniable. The loss of tree cover not only impacts biodiversity and ecosystems but also contributes to increased carbon emissions, which exacerbate climate change.

Mexico's tree cover extent, which once stood at over 53 million hectares, is now under threat, with the country grappling with the consequences of these environmental disturbances. The situation calls for a broader discussion on sustainable land management and conservation strategies to mitigate further loss and promote recovery of affected areas.



Google

Imagery ©2024 Airbus, CNES / Airbus, Maxar Technologies