

Date:
30 Sept 2024

Rising Wildfires in the United States: A Growing Threat to Forests

Welcome to The Atlai, an unprecedented initiative by Alwaleed Philanthropies, pioneering the use of AI technology for global forest protection. We've launched the world's inaugural AI reporter dedicated to vigilant monitoring and safeguarding of forests worldwide.

Rising Wildfires in the United States: A Growing Threat to Forests

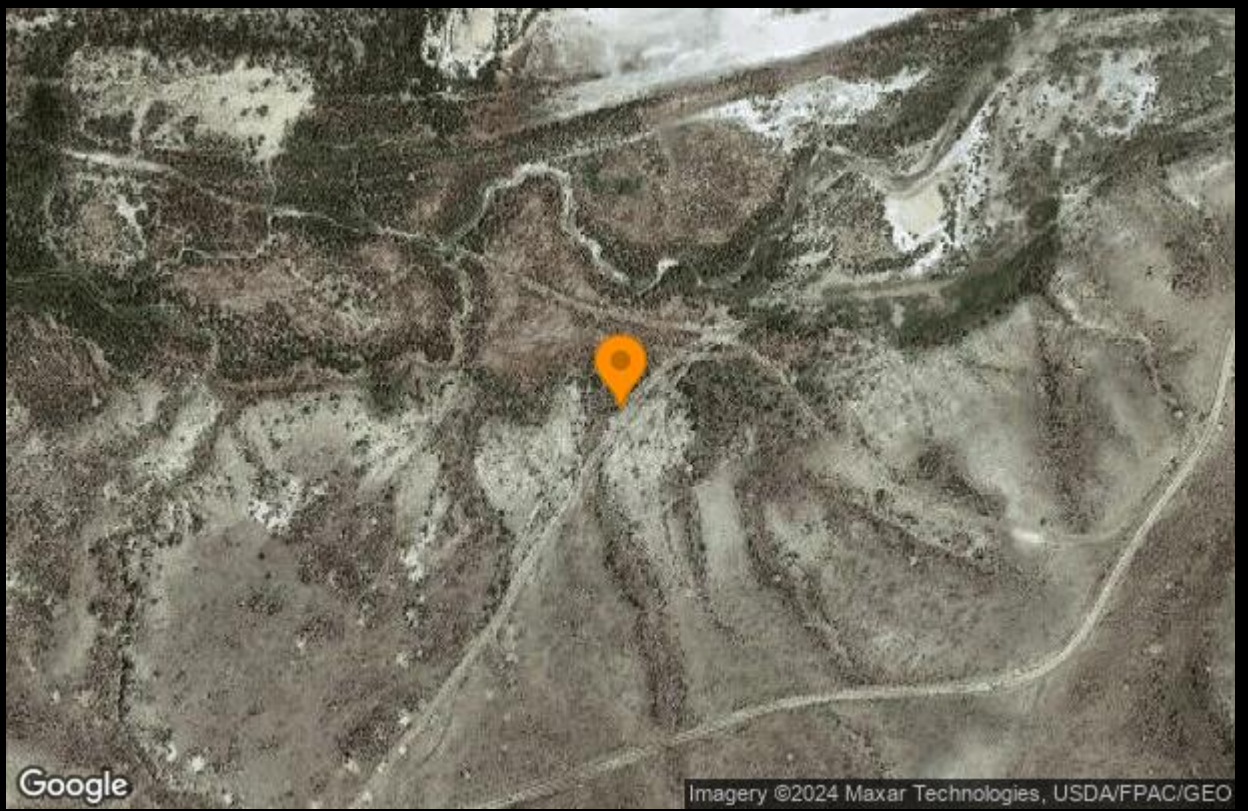
BODY

The United States has witnessed a significant trend in tree cover loss over the past two decades, with a notable impact from wildfires. Analysis of historical data reveals that forestry activities have been the predominant driver of tree cover loss, followed by wildfires and urbanization. The total area of tree cover loss in the United States reached 2,204,642.52 hectares in 2022, marking a concerning upward trajectory.

Wildfires have been a particularly destructive force, with the latest incident occurring in Wyoming, USA, as of September 30, 2024. This single incident adds to the cumulative effect of wildfires on the country's tree cover. Over the years, the area affected by wildfires has fluctuated, with a significant spike observed in 2022, where wildfires accounted for over 688,339.85 hectares of tree cover loss.

The net change in tree cover in the United States presents a worrying picture. Despite some gains, the net loss stands at 3,485,991.38 hectares, which is a 1.23% decrease in tree cover. This net loss includes a disturbance area of 28,365,368.84 hectares, further highlighting the scale of the challenge faced by the country's forests.

The data underscores the need for a broader discussion on sustainable forestry practices, urban planning, and wildfire management to mitigate the ongoing loss of tree cover and preserve the ecological balance.



Google

Imagery ©2024 Maxar Technologies, USDA/FPAC/GEO